

SERVING THIS COUNTY SINCE 1958



Graves County Times

EXTENSION

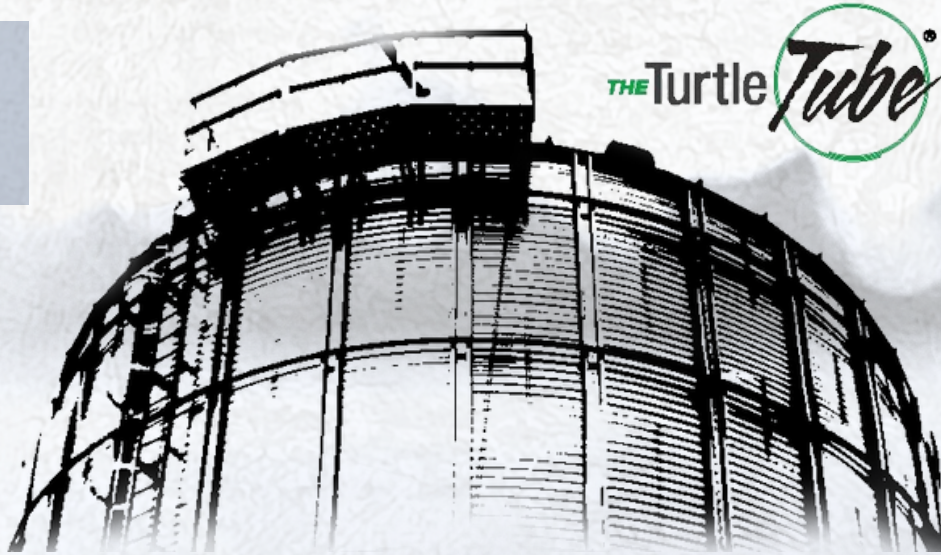


The first known settler of Mayfield was John Anderson of

Albermarle County, North Carolina in 1819. Anderson built the first house in Mayfield, a log cabin, on what is now North Fifth Street. Appointed the first Court Clerk, he put Mayfield on the map by securing a U.S. Post Office, and was also one of the town's first retailers.



Disaster Preparedness Collaboration



Graves County was one of the many communities deeply impacted by the December 10, 2021 Quad State Tornado. Mayfield Grain Company, a large grain elevator in the heart of Mayfield, took a direct hit in this storm and ultimately chose to permanently close their doors at this location.

According to the USDA, Graves County is the 8th largest sized county, the 5th largest county in grain production, and 1st in Ag Receipts in Kentucky. At full capacity, Mayfield Grain stored over 6.5 million bushels of grain and served approximately 200 local farmers. The loss of this facility left farmers scrambling to build new and/or larger grain storage facilities on their farms. These new facilities bring with them the potential for an increase in grain entrapment accidents across the very large county and of the 10 active fire departments across the county, only two stations had grain entrapment rescue devices.

This concern was brought to the Graves County Agriculture and Natural Resources Extension Agent's attention at a Graves County Farm Bureau meeting, and it was then decided that Graves County Cooperative Extension Service and Farm Bureau would do what they could to make sure that every active department in the county had a rescue device at their station.

At the next meeting, the Extension Agent reported their research on devices and a voucher program through Turtle Plastics available for anyone wanting to donate these devices to their local fire departments. Within a few hours of the close of the Farm Bureau meeting, donations were secured from ag

businesses and private producers to be able to purchase a Turtle Tube Rescue Device for each station. Graves County Emergency Management helped provide information needed to get adequate supplies and distribution information. The Extension Agent ordered the devices and worked with the Kentucky Department of Agriculture's Safety Administrator to coordinate training opportunities once the devices were received.

On July 13, 2023 over 80 first responders and several farmers, Extension representatives, and Farm Bureau representatives gathered for a meal sponsored by River Valley Ag Credit and distributed the devices to each department's chief.

Graves County Emergency Management Director remarked at what a relief it is to have these devices now spread around the county and this sentiment was shared by all the first responders. Seconds are important where grain entrapment rescue is involved, and being able to spread these devices across the county will not only help keep farmers safer but also help protect our first responders who might show up to these emergencies. Graves County had a grain entrapment death in March of 2020 so the pain of that event is still fresh for people in this community. While the hope is that these devices are never needed, the long-term impact in having these readily available will benefit Graves County farmers and first responders for many years to come by decreasing the amount of time it takes for this necessary equipment to show up on site and potentially save lives.

PROVIDING GRAIN ENTRAPMENT DEVICES TO FIRST RESPONDERS





FARMERS MARKET KICKOFF



Holiday Market Success

Recognizing that the community needed something fun and exciting to look forward to, together with the Graves County Extension Office, the farmers' market committee planned and hosted this Holiday Market Event on Saturday, November 11th. The original plan was to host on the future market site, however there was issues with getting it accessible for customers to get to with the ongoing cleanup happening downtown. It was then decided it would be hosted at the Graves County Extension Office, but left only two weeks to get vendors and advertise.

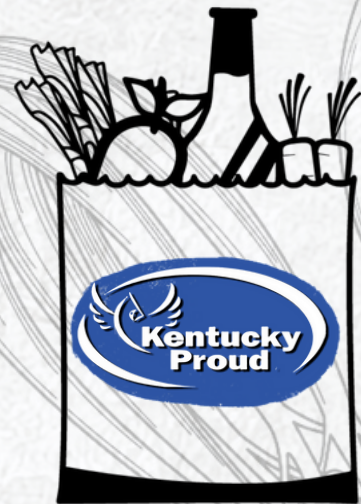
To draw more people in, the Extension Office personnel decided to band together and create a fun holiday experience by having county Ag Agent and her husband dress up as Santa and Mrs. Claus for children to visit, the FCS Agent and homemakers baked homemade sugar cookies for Santa to give out and prepared hot cocoa, and the 4-H program assistant created holiday crafts for the children to do. The office support staff were also in attendance helping make sure everything was running smoothly. Thanks to this effort, even in a short window of time, a total of 19

Graves County vendors were secured and the building was full of local shopping opportunities. Over 175 people came to shop and visit Santa, including the Mayor of Mayfield, which more than surpassed what the committee had hoped for. Thanks to this huge success, the market was able to obtain official KY Proud Status, more community partners have gotten involved, and funding has been applied for so that final plans can start coming together to create a market that this devastated community deserves.

This project was a strong example of the success of community collaborations and proof that the community members support this endeavor. Community groups represented in this effort are Pilgrims Pride Poultry, Hometown Improvement Project, Mayfield Rebuilds, Mayfield Urban Planning Team, City of Mayfield government, Graves County government, Graves County Health Department, West KY Rural Electric, Riley Architects, US Bank, 1st Kentucky Bank, FNB Bank, and Graves County Cooperative Extension.

GRAVES COUNTY IS RANKED IN THE TOP FIVE KENTUCKY COUNTIES FOR WHEAT PRODUCTION IN 2023

BE ON THE LOOKOUT FOR MORE MARKET NEWS IN SPRING 2024





POSITIVE

Teaching Workforce Preparation

Research conducted by Harvard University, the Carnegie Foundation, and Stanford Research Center indicates 85 percent of job success comes from having well-developed soft and people skills, and only 15 percent of job success comes from technical skills and knowledge (hard skills). Employers are often prepared to teach technical job skills; however, the intangible skills of being a team player, time management, and positive attitude are difficult to teach on-site but are critical to success.

To address this need, Graves County Extension Office offered portions of the Positive Employability: Preparing for Financial Success program to provide clientele with the personal skill sets and resources to be workforce ready.

As part of the Positive Employability program, the Graves County Extension Office partnered with

- WKCTC Adult Learning Center, ESL & GED students
- Graves County High School (5 senior English classes & 5 JAG classes)
- Mayfield Independent Schools Family Resource Center (English & Spanish)
- A New Beginning for Women & Children Shelter

The program consisted of three curriculum sets delivering objective-based learning through interactive learning activities, including Ten Soft Skills for Success, Conveying Your Message and Listening and Inquiry for A New Beginning for Women & Children and Ten Soft Skills for Success for the other partnerships.

Over 280 people participated in the workshop series. Out of those evaluated on the 10 Soft Skills for Success program:

- > Over 90% learned the soft skills and how they would benefit them.
- > 81% plan to manage their time to enhance their productivity.
- > 243 said they plan to use empathy, professionalism and communication to build workplace relationships.
- > 237 said they plan to utilize the soft skills learned to contribute to a more efficient and productive workplace.

Those from A New Beginning for Women & Children were also evaluated on the Listening & Inquiry and Conveying Your Message programs. 90% plan to utilize listening cues such as nonverbal & verbal in conversation as well as identifying barriers to successful communication and demonstrating stronger verbal and nonverbal during communication. Participants had a strong interest in the nonverbal cues they didn't realize they had been giving future and current employers as well as other professionals they come in to contact with.

& Financial Management

EMPLOYABILITY





Preparing Youth for the Future

Over the past five years (2015-2020), Kentucky has reported that only 52% of children attending kindergarten 42.2% in Graves County are actually prepared and equipped to succeed. In many Kentucky counties, limited resources or the environment may serve as barriers for healthy lifestyle choices related to early childhood development and physical activity.

As an innovative strategy to improve early childhood development skills and increase kindergarten readiness with Graves County residents, the Family and Consumer Sciences Agent partnered with the Graves County Public Library to implement Laugh and Learn Playdates.



Through this program, participants work on improving early childhood development skills and increasing kindergarten readiness. Thirty-eight adults and 46 children participated in this program. As a result of this program, 87% of children knew their full name, 62% of parents or caregivers reported their child could follow simple rules and routines without reminders, and 83% reported an improvement in child's ability to play with other children. In regard to physical activity, 66% of participant's parents or caregivers noticed their child continuing in tasks that were challenging. In addition to individual behavior change, 68% reported an increase in their child's willingness to try new foods, and 66% reported their family conducted activities learned from Laugh and Learn Playdates at home.

LAUGH & LEARN

In regard to increasing early literacy, 52% reported increasing the amount of time reading together.

At the completion of the program, participants shared...

- > Thank you so much for the different kinds of activities so I could see the areas we need to focus on more at home.
- > I would have never thought the pumpkin muffins would be such a hit, we have made them several times at home.
- > I never knew what types of things I needed to work with my child on to get them ready for Kindergarten, these programs have opened my eyes.

ESTATE PLANNING

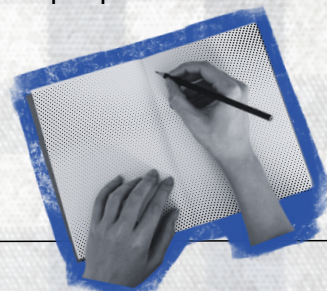
Estate planning can save time, money, and stress for grieving family members upon death. Making an estate plan helps ensure wishes are carried out the way you want, and in a timely manner. Estate planning is not just for the wealthy or aged. It involves arranging for the use and disposal of your resources and property after your death. It can be a valuable tool for you and your loved ones. Yet only about 33% of Americans have put these plans in place, according to a new survey from senior living referral service Caring.com.

That means 67% are leaving what happens to them and their assets in case of disability or death up to others, including the state. Graves County Extension partnered with a local attorney specializing in estate planning, elder law, and estate administration as well as a local farm financial service specializing in bookkeeping and tax services for farmers. As a result of the estate planning seminar attended by close to 50 people.

95% plan to implement at least one strategy learned in regards to estate planning.

82% have created at least one specific estate planning related for their family, farming operation or business based on what was learned.

95% stated that yes, they feel what they learned has assisted them in being more effective at managing their estate planning needs.





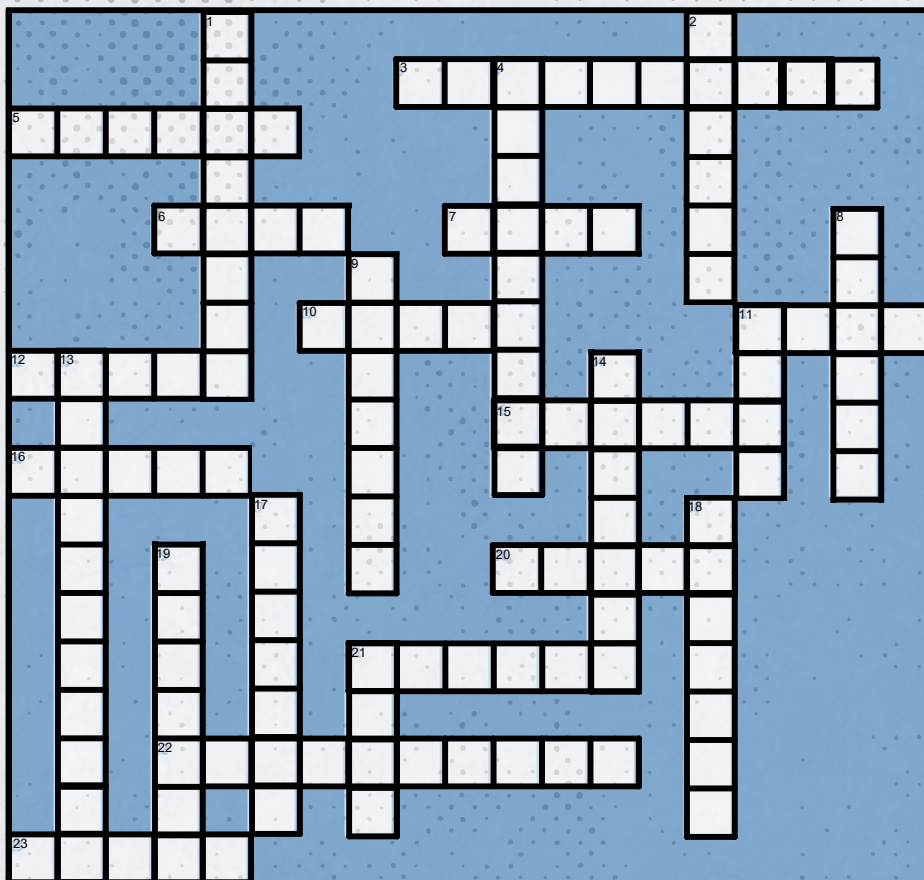
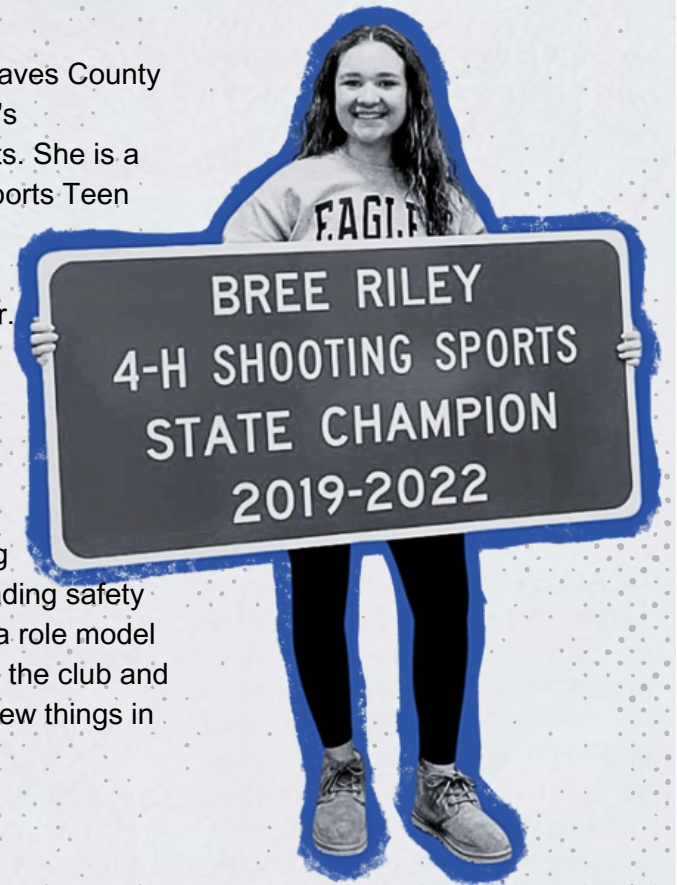
SHOOTING SPORTS SUCCESS

Bree Riley is a sophomore at Graves County High School and has been a member of 4-H Shooting Sports since eligible at age 9. Bree is a talented and dedicated young woman with a bright future ahead of her and we are so proud of her talents in the Graves County 4-H program. Her achievements in 4-H Shooting Sports are stellar. Bree has taken home the state championship in 4-H Shooting Sports State Competition many times, including the following championship titles in addition to many other state placings:

- 2019 – State Champion in .22 Pistol
- 2020 – State Champion in .22 Pistol
- 2020 – State Champion in .22 Sport Rifle
- 2020 – State Champion in .22 Target Rifle
- 2021 – State Champion in .22 Pistol
- 2022 – State Champion in .22 Pistol

This year, over 990 youth competed in the state competition. It is a large event with very high standards of excellence. Thanks to Transportation Cabinet District 1, we were excited to celebrate Bree's legacy of 4-H State Shooting Sports Championships with a state road sign near the new Graves County Extension Office building.

Mayfield and Graves County is proud of Bree's accomplishments. She is a 4-H Shooting Sports Teen Coach and a recipient of the 4-H Silver Honor. Shooting Sports has given Bree the opportunity to be a leader by assisting youth, mentoring families, and leading safety classes. She is a role model to other youth in the club and helps them try new things in shooting sports.



Across

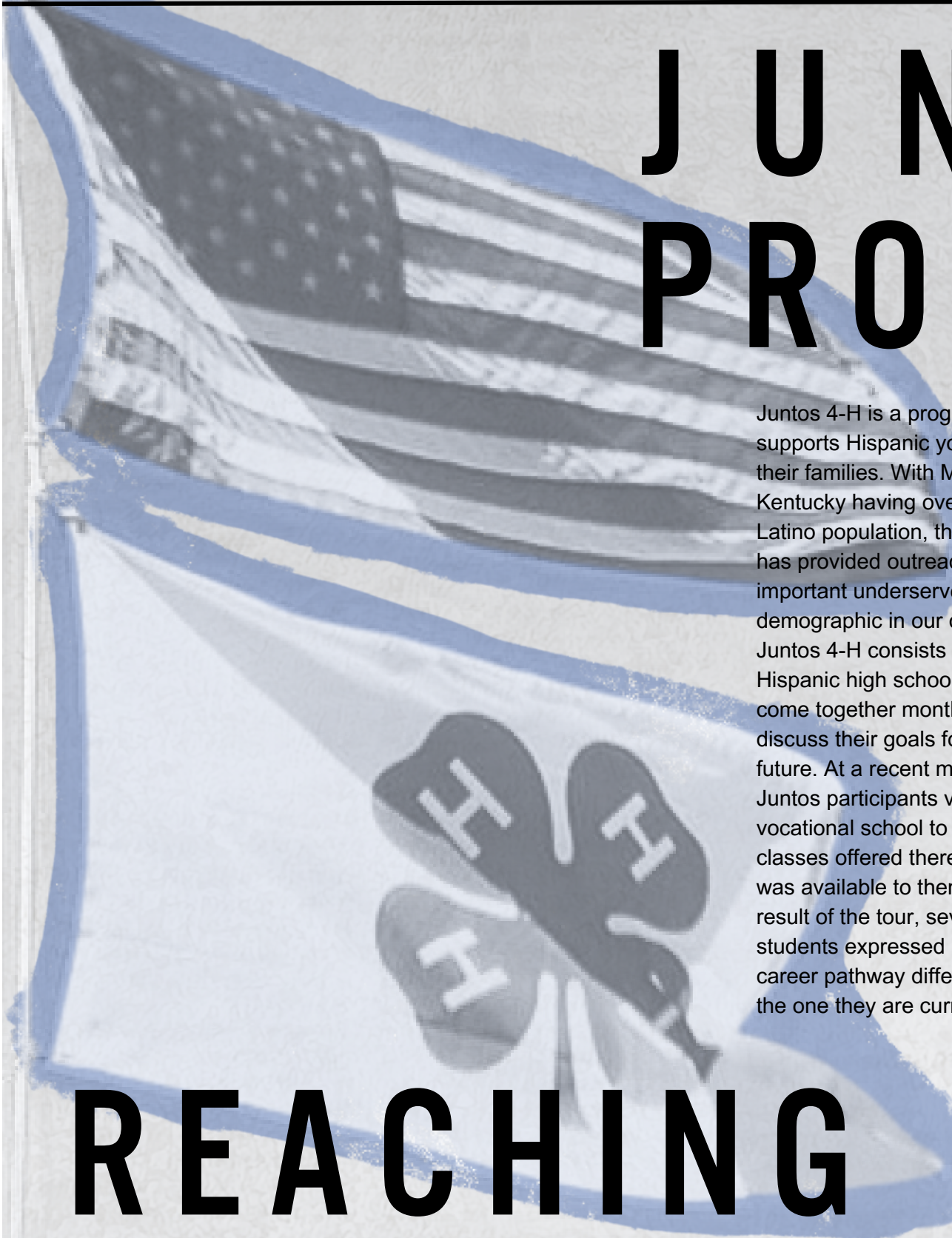
- 3. who freely offers to lead a club
- 5. a program supporting latino students
- 6. for clearer thinking
- 7. "to make the _ best" the 4-H motto
- 10. for greater loyalty
- 11. overnight summer activity
- 12. for larger service
- 15. small plant representing luck
- 16. color symbolizing springtime of life
- 20. color symbolizing precise and cleanliness
- 21. club teaching youth to mend clothes using a needle and thread
- 22. club for mini 4-Hers
- 23. " _ by doing" the 4-H slogan

Down

- 1. entries for fair
- 2. for better living
- 4. club acquainting youth with farm animals
- 8. a 4-H conference for middle schoolers
- 9. an area of 4-H teaching youth about giving back
- 11. first 4-H club
- 13. an area of 4-H exploring animal sciences
- 14. club teaching youth how to prepare food
- 17. Graves County's 4-H Agent
- 18. what 4-H hopes to help youth become
- 19. a member holding a position of command
- 21. an area of 4-H delving into math and engineering



JUNTOS PROGRAM



Juntos 4-H is a program that supports Hispanic youth and their families. With Mayfield, Kentucky having over 10% Latino population, this program has provided outreach to an important underserved demographic in our community. Juntos 4-H consists of 35 Hispanic high schoolers who come together monthly to discuss their goals for the future. At a recent meeting, Juntos participants visited the vocational school to discuss classes offered there and what was available to them. As a result of the tour, seven students expressed interest in a career pathway different than the one they are currently on.

The school has several requirements to change pathways, but one student met those requirements and began taking classes at the vocational school in his area of interest. Youth expressed interest in receiving more information on becoming a welder or mechanic. The Juntos 4-H program supports youth in making a post-high school plan that aligns with their goals and interests. Juntos 4-H has been able to bring several partners together to provide this important experience.

REACHING MORE YOUTH

clubs are present in all three school systems in Graves County

30 IN-SCHOOL CLUBS & THREE AFTER-SCHOOL CLUBS

The 4-H School Club Program in Graves County is growing by leaps and bounds. These programs work to present youth with a well-rounded view of 4-H by providing a lesson on each of the seven curriculum areas. Currently, over 600 youth are involved in 4-H school clubs, and these experiences provide a pathway from school to community club involvement. Many youth get their start in a 4-H school club. We are proud of the leadership skills that youth demonstrate in school clubs and are excited to see them grow in the future.

it starts with



US.

WHAT'S WILDLY POSSIBLE
Discover



stay in touch



4200 US-45 N
MAYFIELD, KY 42066



@GRAVESCOUNTYCES



GRAVES.CA.UKY.EDU





GRAVES.CA@UKY.EDU



270-247-2334



KENTUCKY  
COOPERATIVE EXTENSION

UK MARTIN GATTON COLLEGE OF AGRICULTURE, FOOD AND ENVIRONMENT
KSU COLLEGE OF AGRICULTURE, COMMUNITY AND LIFE SCIENCES

Issue 2

**Cooperative
Extension Service**

Agriculture and Natural Resources
Family and Consumer Sciences
4-H Youth Development
Community and Economic Development

MARTIN-GATTON COLLEGE OF AGRICULTURE, FOOD AND ENVIRONMENT

Educational programs of Kentucky Cooperative Extension serve all people regardless of economic or social status and will not discriminate on the basis of race, color, ethnic origin, national origin, creed, religion, political belief, sex, sexual orientation, gender identity, gender expression, pregnancy, marital status, genetic information, age, veteran status, physical or mental disability or reprisal or retaliation for prior civil rights activity. Reasonable accommodation of disability may be available with prior notice. Program information may be made available in languages other than English.
University of Kentucky, Kentucky State University, U.S. Department of Agriculture, and Kentucky Counties, Cooperating.
Lexington, KY 40506



Disabilities
accommodated
with prior notification.

December 2023